



# Oakley & Deane Parish Community Plan

2011



*Basingstoke  
and Deane*

# Community Plan

## Oakley & Deane Parish

### Introduction

The concept of the Parish Plan was put forward by government and adopted by local councils as a method of establishing what matters to people in their own community.

The purpose of a Parish Plan is to provide a vision statement for the present and future, setting out the aims, desires and objectives of the local community. The Parish Plan is important, as it will be taken into account by others, such as the Parish, Borough and County Councils, when making decisions about funding and how the Parish will develop in the future.

This Parish Plan was initiated by the Borough Council in partnership with the Parish Council, and then taken on by an independent Steering Group. The Group was made up of local representatives and residents and called itself Village Vision.

Communities are growing and changing all around us. Many people have strong views on whether this process of change is for the better or the worse. Unfortunately for a majority of individuals this is as far as their involvement will go. Parish plans give everyone in a community the opportunity to influence the development of their surroundings.



## **A Parish Plan should:**

- **Be comprehensive, considering all aspects of local life including social, economic and environmental issues of concern to our community.**
- **Involve the whole community; everyone should have a chance to have their say and get involved in the Parish Plan.**
- **Be based on information provided by the community participation, surveys and research.**
- **Involve Local Authorities with the process.**
- **Be focused on creating an action plan with a clear statement of Who? What? Why? and How?**

## **Benefits of having a Parish Plan:**

- **Creating a real sense of community spirit.**
- **Reinvigorating local democracy.**
- **Encouraging groups and organisations to work in partnership.**
- **Providing clear defined evidence of community needs and priorities.**
- **Strengthening the Parish Council's relationship with the community.**
- **Providing a basis upon which BDBC can help determine how local services are delivered.**

Parish plans are intended to be evolving documents, outlining how a community would like to develop over the next ten years, and usually include an Action Plan detailing how these developments can be achieved.

It is important to recognise that the Parish Plan is just the beginning of achieving the aims of the community.

Some may be sceptical about the worth of this entire project and that scepticism may be well founded. There is little doubt that financial restrictions and political expediency may, at times, delay or thwart our efforts. However, we are much more likely to be heard speaking as a community with a single voice.

The current government talks in terms of the 'Big Society,' with more say and responsibility to go to local communities. To support this there is proposed legislation in the form of the Localism Bill which will impact on both the Village Design Statement and Parish Plan.

We must continue to work together to achieve our goals.

**The resulting Action Plan can be viewed on the Oakley & Deane Parish Council website.**

**[www.oakleydeane-pc.gov.uk](http://www.oakleydeane-pc.gov.uk)**



## Creating the plan

**Jan 31<sup>st</sup> 2009:** Initial public meeting introducing the Parish Plan project and identifying possible steering group members. The aim was to find what the Parish needed to improve village life and to produce an action plan working towards this.

**March 2009:** Inaugural meeting of the Steering Group. The project would be called "Village Vision." An initial questionnaire would be distributed to gain a broad range of basic information.

**May 2009:** The initial questionnaire was distributed to all homes in the Parish. Village Vision website pages and Email contact set up within the Parish Council website.

**June 2009:** Questionnaire results received. The data gave a good basis for a more in-depth analysis of the results to be undertaken within the community.

**July 2009:** Design and content of the Village Vision stall for the Oakley Show was agreed.

**August 2009:** At the Oakley Show, questionnaire data was displayed in graph and chart form and many useful comments and suggestions were received from villagers.

**September 2009:** Top issues compiled using data from initial meeting in January, questionnaire results and input from Oakley Show.

**October 2009:** A school project was suggested to collect information from young people un-represented in the initial survey.

**November 2009:** A project involving Oakley Infants and Junior pupils with Oakley students at Cranbourne was designed to be undertaken in the New Year and results presented to the Group in March.

**January 2010:** Local Community Groups and Clubs targeted for further input.

**February 2010:** Work on a second and final questionnaire started.

**March 2010:** Results of schools project presented to VVSG and judged very successful with much valuable information.

**May 2010:** Design and content of second and final questionnaire now in draft form for completion in June.

**June 2010:** Questionnaire distributed to over 2,200 households within the Parish.

**July 2010:** Questionnaire returned and data recording and analysis commenced by the Group. Design and content of the Village Vision stall for the Oakley Show was agreed.

**August 2010:** Village Show stall presented Village Vision work so far.

**September 2010:** Data recording and analysis completed.

**October 2010:** Design of final report started.

**November 2010:** First draft of final report discussed. Work to continue with the aim of completing the report by March 2011.

**January 2011:** Final report divided into two documents: The Parish/Community Plan and the resulting Action Plan



## The Parish

Although mentioned in the Domesday Records, the large village that we now know as Oakley was in fact a series of small villages and hamlets until the 1960's when the rapid development that took place in Basingstoke led to a similarly rapid development of Oakley. This caused the small villages of Church Oakley, East Oakley and Newfound to join up, leaving the villages of Deane and Malshanger relatively unchanged. This rapid growth was predominantly housing with the consequence, as stated in the Village Design Statement, that a focal area of shops and facilities did not develop.

A Parish Council had existed in Church Oakley since the Local Government Act of 1894 and this was amalgamated with the East Oakley part of Wootton St. Lawrence parish in 1966. The Deane Parish meeting combined with Oakley Parish Council to become Oakley and Deane Parish Council.

Oakley is situated 5 miles west of Basingstoke in North Hampshire. The population of Oakley, Newfound, Malshanger and Deane is approximately 5,600 and has over 2,200 households. The village is surrounded by mixed farmland with sheep grazing and pockets of ancient woodland. The residents enjoy their village status and do not wish to be engulfed by any possible expansion of Basingstoke. There is a well maintained network of Rights of Way within the village and surrounding countryside giving residents access for walking, riding and other country pursuits. Oakley is approximately 100 metres above sea level and near to the source of the River Test. The local countryside undulates and the ground is composed of chalk with flint capped with clay. Oakley does not have a main road running through the centre of the village and this may have contributed to the lack of development of a shopping area such as that seen

in the neighbouring village of Overton. The London to Exeter and London to Southampton railways cut through the village but the station was an unfortunate victim of the Beeching cuts in the 1960's. Access to other towns is good, the nearest being Basingstoke, Winchester, Reading, Andover and Newbury.

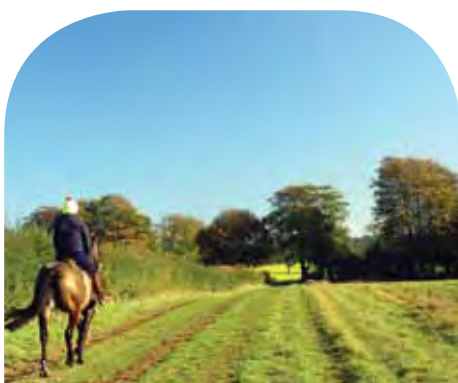
The North of the Parish is dominated by the Malshanger Estate including Malshanger House, which was built about 1806 and became the residence of Jeremiah Colman Esq JP, who established the Colman mustard business.

The village of Deane and the area formerly known as Church Oakley are designated Conservation Areas. In the centre of the village there are two ponds. The main one, at the junction of Oakley Lane with Hill Road and Rectory Road is the focal point of the village. This is a typical village duck pond with a willow tree and is surrounded by thatched and brick and flint cottages, including the old forge.

There are four village halls: East Oakley, Andover Road, St. John's Centre and the recently extended and refurbished St. Leonard's Centre, but there is no large hall or community centre in the heart of the village.

Oakley has well-subscribed infant and junior Church of England Schools, but students have to travel outside of the village for secondary and further education.

The Doctors' surgery is situated in Sainfain Lane. The Oakley Practice is in partnership with the practice at Overton; this has resulted in a reduced service in Oakley and often requires patients to travel to appointments in Overton.



Of the churches in the area, St. Leonard's Church of England is the oldest with parts dating back to the 12th century. It was added to in the 15th and 16th centuries and substantially refurbished and added to in 1869. St. John's Church of England is now closed and is expected to be demolished; however, the graveyard will remain. The War Memorial to those who died in the First and Second World Wars is situated in the grounds of St. John's and the annual Remembrance service is held here. There has been some discussion about the possibility of moving the War Memorial to a more central location within the village. All Saints' Church of England, built in 1888, is situated in the village of Deane. Jane Austen's father was Rector of Deane from 1764 to 1801. The Methodist Chapel built in 1866 adds to the attraction of the main pond area. Oakley Community Church meets regularly at the Andover Road village hall.

The village is well served with recreation areas and allotments. There are currently over fifty mixed size allotments and the Parish Council is hoping to meet the needs of those who are on the waiting list by providing further allotments. Beach Park recreation area boasts: a BMX track, skateboard park, tennis courts, children's play area, a dog exercise area and recycling facilities. At Newfound there are three senior and two mini football pitches, a cricket pitch and a new pavilion with meeting facilities. The Peter Houseman ground is more central to the village and is used as football pitches but also as an informal open space for local residents. Five further play areas can be found at Kennet Way, Lightsfield, St. John's Piece, Avon Road and Upper Farm Road.

There are four public houses: the Barley Mow in the centre of the village, The Fox at Newfound, The Beach Arms on the B3400 and The Deane Gate at Deane. Oakley Hall is an hotel with fine dining and conference facilities. Buttercups cafe is a recent welcome daytime eating venue.

There is a residential care home at Oakley Lodge, set in the grounds of Oakley Hall.

The range of shops is small. In The Vale there is a chemist, a butcher, and a One Stop convenience store incorporating a post office. At Meon Road there is a gift shop, hairdressers, beauty salon and charity shop. There are currently no takeaway facilities and residents have to travel outside the village for this.

The village is covered by a police beat officer and a PCSO and there are many neighbourhood watch schemes.

There are many groups, clubs and associations thriving in Oakley and one only has to read the monthly informative local magazine 'The Link' to read reports about their activities.

#### *Acknowledgments*

*Oakley – The Last 100 years*  
by R. Blackman and S. Warner

*The Parish Council website*



## Youth Project

Early in 2010 local pupils began a collaborative project with Village Vision. The aim was to find out what young people liked or did not like about their village, and to gather ideas on what they wanted their village to be like in the future.

Both Oakley Junior and Oakley Infant schools were keen for pupils to gain the best educational experiences from the project. For that reason, Village Vision simply outlined four key issues that other residents had highlighted as important in an earlier survey and suggested some sample questions for guidance. The key issues concerned the environment, leisure and recreation, shopping facilities and transport. Pupils were aware that their opinions were not restricted to these four areas, nor were they bound by the questions.

Pupils at both schools, with the help of their teachers, devised their own approaches to the project. In some instances they nominated class leaders, whose task it was to interview classmates and record opinions. In other instances, pupils worked in groups and wrote or drew what they thought on to posters. There were class discussions with scribes. They also worked individually. From the start pupils were aware that they were in charge of the project and could include any points they wished.

Senior students from Cranbourne Business College, who lived in Oakley, Newfound or Deane, also participated. This was thanks to Mr David Howe, Headteacher of Oakley Junior School, who liaised with local secondary schools and arranged for Cranbourne pupils to attend the discussion meeting on 5<sup>th</sup> March 2010.

A representative group of pupils – aged from about 4 to 17 years old - presented their findings to Village Vision at this meeting. The Village Vision team

also took the opportunity to ask various prepared ‘checking questions’ with show-of-hands answers.

The discussions and analyses were very informative.

Top of what they liked about Oakley were the Duck Pond, the woods, the parks to play sports in and with slides and swings, lots of open space, the football fields, wild fields to walk in, the shops to buy sweets, the school, the “healthy equipment” in the schools, the friendly people, the wildlife, the buses that run through Oakley and “the fact that there isn’t a very busy main road.”

One very young opinion-former said, “I like all the space that Oakley has. I also like the nature. There are lots of chicks and baby animals that you can see grow up.”

Another commented, “I like the fact that I can go out and play because Oakley is safe.”

A third summed up the general view, “I like the nature in Oakley – the duck pond, the trees and flowers that have been planted or have grown brighten up the village. I like the friendship in Oakley. You don’t need to worry too much about teenagers or anything like that. I like the amount of leisure stuff, too. There are good schools where you can learn and get a good education.”

Amongst the things they did not like were, teenagers hanging around the shops at night, not enough to do in Oakley, not enough shops, alleyways too narrow and too dark, lampposts in the middle of pavements, not enough footpaths and cycleways, litter and dog mess – particularly along Footpath Number 9.

About a third of the representative group avoided using the alleyways and footpaths because these routes were often dirty or fouled with dog mess, many are too narrow and too dark, some are too



near railway lines where fences are down, they don't like meeting other people along narrow ways, some paths are blocked, and there is a continual need to "cross the roads" if you use the alleyways.

Despite these concerns, most pupils felt confident about going around Oakley and to the shops on their own.

## **Asked what would make Oakley a better place, suggestions included:**

- **A Saturday night club**
- **Better equipment in the parks: climbing/cargo nets/assault course equipment**
- **More facilities for football and cricket on unused or vacant land**
- **An adventure trail in the woods**
- **Orienteering trails**
- **A fun fair occasionally**

Things that would make Oakley a safer place for them included cycle paths; skateboard routes so you didn't need to go on the road; Pelican Crossings near Oakley Lane Railway Bridge, Pack Lane crossroads and at the schools; Zebra crossings around the village; and fewer parked cars. Other suggestions included a metal handrail under Oakley Lane Railway Bridge to "keep the cars away" and "cats-eyes along the edges of the roads so cars don't come on to the pavement." Where there was no pavement, "roads could be made single file," so that one side of the road was for pedestrians and cyclists, and the other for traffic.

They thought there should be more recycling bins close to the shops and in the parks. They considered rubbish bins should have lids to prevent litter escaping or flies getting in. The younger children liked bins that talked, sang or wiggled when you put rubbish into them. One budding entrepreneur said when you put rubbish into a bin you should get a token that you could save to exchange for money or sweets. Garden waste should be used to make compost for the village.

There was a strong view that there should be more trees and flowers in parks, "open spaces," green verges and around the pond. The justification was

that these would encourage more animals and insects, make the village more interesting and pretty, and provide "more trees to climb."

There was concern for the number of hedgehogs squashed on roads. More plants, and "trees and bushes that they could hide in," would be better for them, too. There could be hedgehog sanctuaries in the school grounds and local parks with "Hedgehog Crossing" warnings like the "Ducks Crossing" ones at the Pond. Some also wanted "more fields for animals to run around," as well as posters around the village "to show people how interesting wildlife is."

Only about a third of the group attended clubs in Oakley. For many the timing was not convenient or clashed, or activities were difficult to get to by walking or bus. However, new facilities they would like to have included:

- **Weekend and Friday night youth clubs for teenagers**
- **A Book Club and/or Writers' Club**
- **A Science Club**
- **Nature and Environment clubs**
- **A Graffiti wall, indoors or outdoors**
- **Sewing, cooking and crafts clubs**
- **Indoor sports clubs**
- **A sky-wire, an adventure trail, a trampoline, a rock climbing wall**

About half the group used the parks regularly. For those who didn't, the most common reason was that it was too far from their home. Additional equipment they would like in parks include basket ball and rugby posts.

Most thought it would be useful to have a new, bigger school hall that could be used for indoor sports, dance and drama; for assemblies, and for school productions and performances.

They would like more shops in Oakley, particularly a take-away, fish & chip or fast food shop. Some wanted more sweet shops, young peoples' fashion shops, bookshops, arts & crafts places, pet shops and a vet.



A Village Vision team member noted that at no time during any of the discussions did any of these young people request anything to do with IT or computer games. All their wishes focused on outside, adventurous or creative pastimes.

For the senior students their greatest disappointment was the lack of part-time jobs around Oakley. They found transport to Basingstoke expensive and felt that this often restricted opportunities for part-time work, or what they could do in their leisure time. They did not like having to rely on parents or taxis for late night trips.

The discussion group, made up of about thirty pupils from Oakley Infant School, Oakley Junior School, and students from Cranbourne Business and Enterprise College who live in Oakley, fielded questions and gave their opinions with confidence and clarity that would do credit to adult professionals.

Village Vision would like to thank all who helped with this survey of young peoples' opinions.

---

## Action Plan Questionnaire

The Action Plan Questionnaire was devised following extensive preliminary work. This included information gathered from local consultations, comments collected at events such as the Oakley Show, and the findings of an initial survey. The aim of the questionnaire was to gather views from the widest range of residents. It was designed to allow all household occupants, aged 16 and over, to respond to each question.

The Introduction to this document states, 'Parish plans are intended to be evolving documents', and this is clearly highlighted by the responses to Q28 and dissatisfaction with Rectory Road Pond in Oakley which was in a very poor state. The Parish Council was acutely aware of this issue, and due to their efforts and credit the Pond is now well underway to being re-established and landscaped.

Comments were invited with each question and there was a final Section 5 stating, 'Feel free to add any comments on any subject you feel strongly

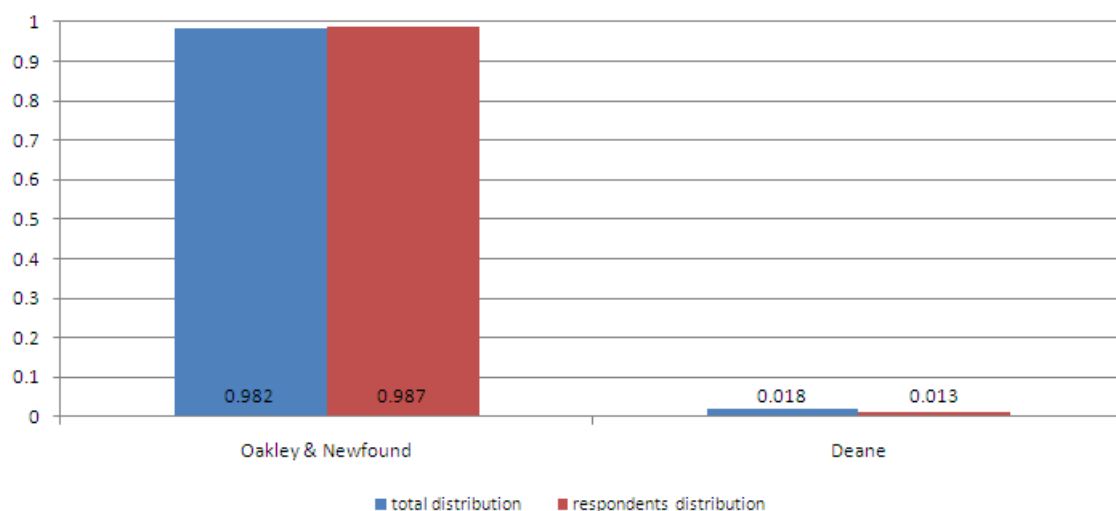
about in relation to the Parish that isn't covered by the above questions.' Many respondents used this section to express their overall satisfaction with life in the Parish despite any issues raised. Conversely, to show you can't please all the people, one respondent replied:

'I have not completed the survey. I do feel that this whole exercise is unnecessary and an over-expense of public money; particularly in these times of austerity and public savings. I am also concerned why a £100 prize draw is considered necessary as an inducement to encourage people to complete this survey. In view of my above views I do object to having to contribute (admittedly in a small way) to subsidizing the raffle through my Council Tax which has to be found through my OAP. I do not wish to be included in the Prize Draw.'

To that person's credit, at least they did take the time to respond and let their views be known.



# Results of questionnaire

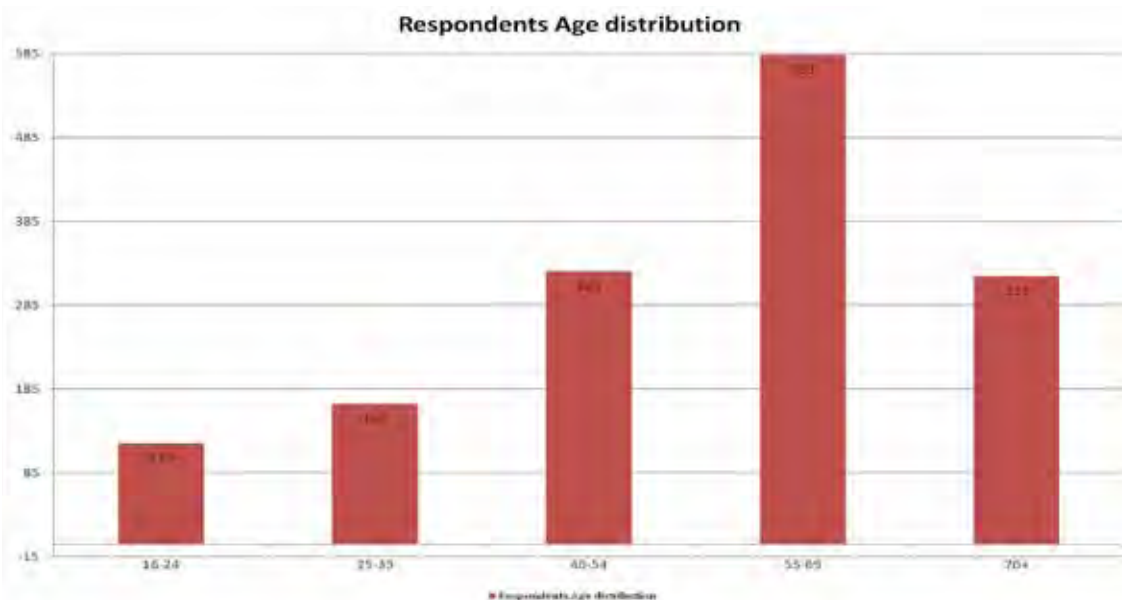


**Figure 1 Households and respondents distribution**

The final consultation activity produced responses from 759 households, all of which have been anonymously analysed. The information provided was used to draw up a profile of the community.

Of the total respondents, 724 are located in Oakley, 25 in Newfound, and 9 in Deane. The distribution of this population is well aligned with the distribution of all the households that exist in the Parish. This is evidenced by the information presented in Figure 1, in which

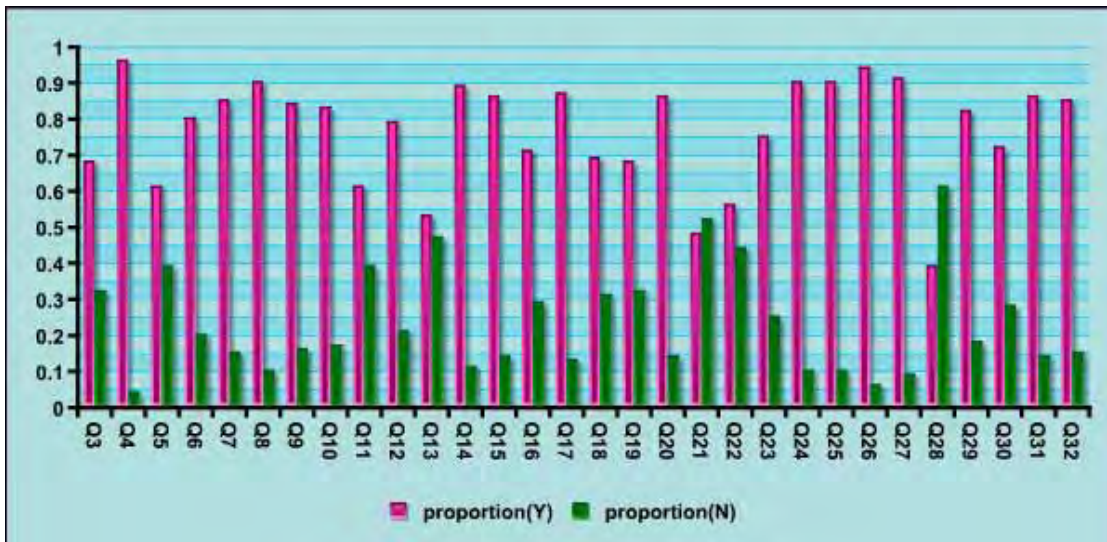
both distributions are compared. The figure shows that the households and respondent-households are distributed in almost the same proportions across the three geographical areas that are part of the Parish. In addition to this, the random nature of the information collection procedure is sufficient to confirm that the results derived from the analysis of the questionnaire described herein, is a reliable representation of the Parish's population as a whole.



**Figure 2 Respondents age group distribution**

Of the 1514 people who responded to the questionnaire, 120 are in the 16-24 age group, 167 in the 25-39 age group, 325 in the 40-54 age group, 583 in the 55-69 age group, and 319 in the 70+ age group. This means that 40% of the respondents

is under 40, 40% is between 40-69, and 21% is over 70. This indicates that our community is rather older than the UK average. The distribution of the respondents' age groups is presented in Figure 2.



**Figure 3 Distribution of responses to questionnaire**

The bar chart in Figure 3 shows the distribution of all the responses that were collated. All the questions were expressed in a simple YES/NO format, and the population was required in each case to indicate whether they were or not satisfied with the availability of the particular matter referred to in the question. This chart presents a quick broad view of the overall satisfaction of the community with regards to the current state of the Parish. In the graph the YES answers are represented in pink, and the NO in green.

The labels on the X-axis (horizontal) are the labels used to identify each of the questions included in the questionnaire. A detail description of each one with its accompanying question is included in Table 1 in Appendix 1. Questions in the group Q3-Q11 all correspond to the services available in the Parish. Q12-Q21 queried the community on traffic and transport matters. The group of questions Q22-Q32 covered the environmental aspects of the Parish.

The distribution of the YES/NO responses shown in Figure 4 indicates that most respondents are fairly satisfied with the provision of services in the area (Q3-Q11). The highest levels of satisfaction were recorded for the Village Post Office (Q4) and for the current activities carried out to preserve trees and wildlife habitats in the Parish (Q26).

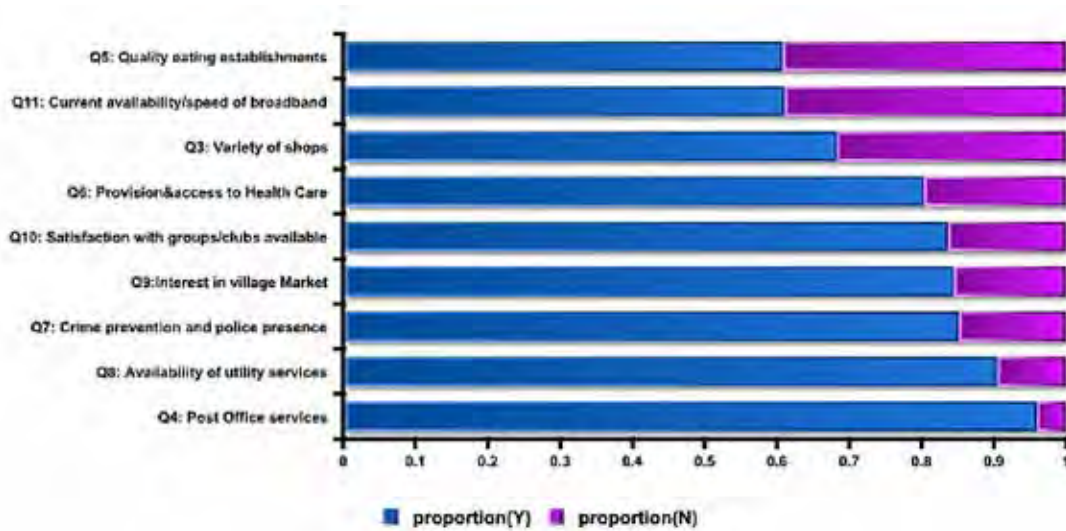
### Questions which demonstrated the highest level of dissatisfaction from the Parish residents include:

- Pack Lane crossroads
- The appearance and maintenance of Rectory Road Pond
- The eating/drinking establishments currently available in the Parish
- The management of the flow and speed of traffic through the Parish

Analysed in age categories, data showed that those in the 16-24 and 40-54 age groups were most satisfied with the Oakley Village Pond. The Post Office Services were highly rated by all age groups from 25 to 70+.

Similarly, all age groups from 16 to 70+ were dissatisfied with the changes at Pack Lane cross roads and the state of the Rectory Road pond. All age groups from 16 to 54 expressed high levels of dissatisfaction with the eating/drinking options locally available. Those over 55 were least satisfied with the management of the flow and speed of traffic, and the maintenance of roads and paths in the Parish.

# Availability of local Services



**Figure 4 Distribution of the YES/NO response for Services**

Facilities are limited in the community; however those establishments that provide services in the Parish are generally highly valued, as demonstrated by the fact that the highest level of satisfaction was achieved by the Post Office (96%) figure 4.

There is also an overall high level of satisfaction with the provision of the utility services (90%) although a number of concerns (10%) were raised with regard to the absence of adequate sewerage for the households located in the Pardown area.

The Parish is considered to provide a relatively safe and peaceful environment. 85% of respondents felt that there is an adequate level of crime prevention and police presence. Nevertheless, there were a number of concerns raised worth noting as, in particular, 15% of the respondents expressed dissatisfaction with low level of police presence in the area.

*“There is little visible presence of the local Police”.*  
*“The Police are hard to get hold of or too busy”.*

Many of the respondents (32%) articulated dissatisfaction with the variety of shops that are available to the community. A number of them recommended a greengrocer as a welcoming addition to the current selection of shops running in the Parish. This particular proposal is further supported by the high level of interest in the idea of deploying a regular village market for the community (84%). Other suggestions mentioned the need for

a hardware DIY shop. A bakery would also be a welcome addition. There is a general perception that there is a need for a greater choice of shopping facilities, and a few comments referred to the lack of competition that currently exists.

*“Limited availability and little investment”.*  
*“Would like a local Bakery, DIY and Greengrocer”.*

Over 40% of respondents expressed concern about the poor quality and performance of the broadband service that is available to the community.

The availability and quality of the eating/drinking establishments in the Parish also raised a fair number of comments. The overall level of satisfaction stands at 61%, but at the same time a number of comments expressed dissatisfaction with the services currently available (39%), particularly the poor level of choice, and the absence of a reasonable take-away facility in the area.

A number of clubs and groups run in the Parish: 10 cater for children, 21 are organised around a particular skill, and 19 different sports clubs are currently running. The benefits of these groups are enjoyed by a large number of community members, as 83% of the respondents expressed satisfaction with the availability and diversity of local groups/clubs. Nevertheless, it is worth noting that 17% of the respondents expressed dissatisfaction, most of it related to the absence of knowledge regarding the clubs/groups that are currently running.

Several members of the community (20%) expressed dissatisfaction with the current provision and access to health care in the Parish. There were a number of comments regarding the inadequacy of the number of appointments currently available in the Oakley Surgery. As a substantial number of residents are retired and elderly there is greater need for a local Health Centre given the difficulties that people generally find in getting out and about as they become frailer. Other concerns were expressed by younger members of the community, as the absence

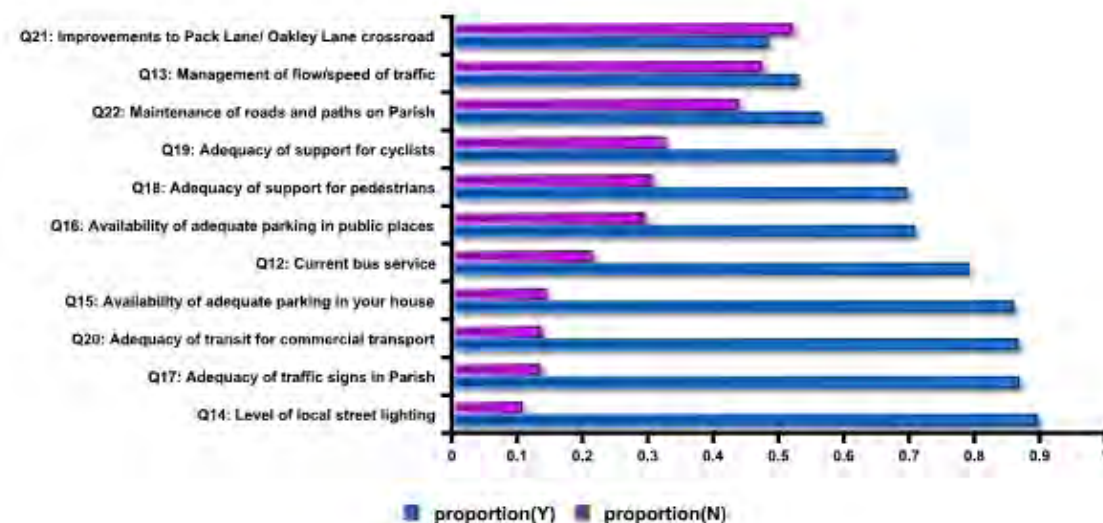
of pre-natal and post-natal care in Oakley was noted in the comments raised on this item of the questionnaire.

*“Shouldn’t have to go to Overton”.*

*“Difficult to get same day appointments”.*

*“More hours in the Oakley Surgery are needed”.*

## Traffic and Transport



**Figure 5 Transport and traffic section responses**

Of all the issues addressed in the Village Vision questionnaire and on the different consultation activities that were carried out throughout the last 18 months, traffic and the problems it causes raised the highest number of comments, and strong feelings amongst the community). The bar chart in Figure 5 shows the distribution of the responses received on the different aspects of Transport and Traffic that were raised in the questionnaire. The purple bars represent the “NO” responses. The blue bars correspond to the “YES” responses.

52% of the respondents raised dissatisfaction with the current arrangements of the Pack Lane/Oakley Lane crossroads. It is worth noting that this is the question in the questionnaire that has a higher number of negative responses than positive ones. Many comments were included in this section, the most popular suggesting the need for installing traffic lights and/or a proper roundabout, instead of wasting money with the recurrent surface works that were recently carried out.



The management of the flow/speed of traffic in the Parish is also a matter of concern for a large number of respondents, 47% of whom indicated that the current regulations are inadequate and ineffective. The violations of the 30 miles speed limit, in various areas of the Parish, i.e. Newfound, St Johns Road, Oakley Lane, were regular comments throughout the responses received.

Although 56% of the responses expressed satisfaction with the general maintenance of the roads and footpaths in the Parish, a whopping 44% of the community expressed dissatisfaction. Numerous potholes are a regular occurrence, restricted pavements on the B3400, the absence of adequate pedestrian crossings, overgrown trees and hedges, the summary closure of footpaths over private land, the absence of cycle paths, are some of the most common concerns raised, all of which would go some way to address the general concern with the overwhelming dissatisfaction that is evidenced in the responses received.

*“Poor road surface, footpaths uneven and hazardous”.*

*“Still many potholes and bumpy surfaces e.g. Rectory Road”.*

79% of the residents expressed satisfaction with the current bus service that is available. Given that it is not clear how many of the respondents really use

the service on a regular basis, and also taking into consideration that 21% consider the service poor or inadequate, it is reasonable to conclude that in the near future this matter ought to be addressed. Although a few comments referred to the absence of a railway station, most of the community seem to find the availability of trains from Basingstoke to be sufficient for their current needs.

The satisfaction with the availability of parking facilities in the area varies greatly, with the difficulties caused by the school runs being a major concern to most residents. The majority of comments raised by the 29% of respondents who expressed dissatisfaction with the parking available in public places were in some way related to the difficulties created during these periods. 86% of respondents are satisfied with the parking available at home, although a few comments were expressed with regard to “illegal” parking practices.

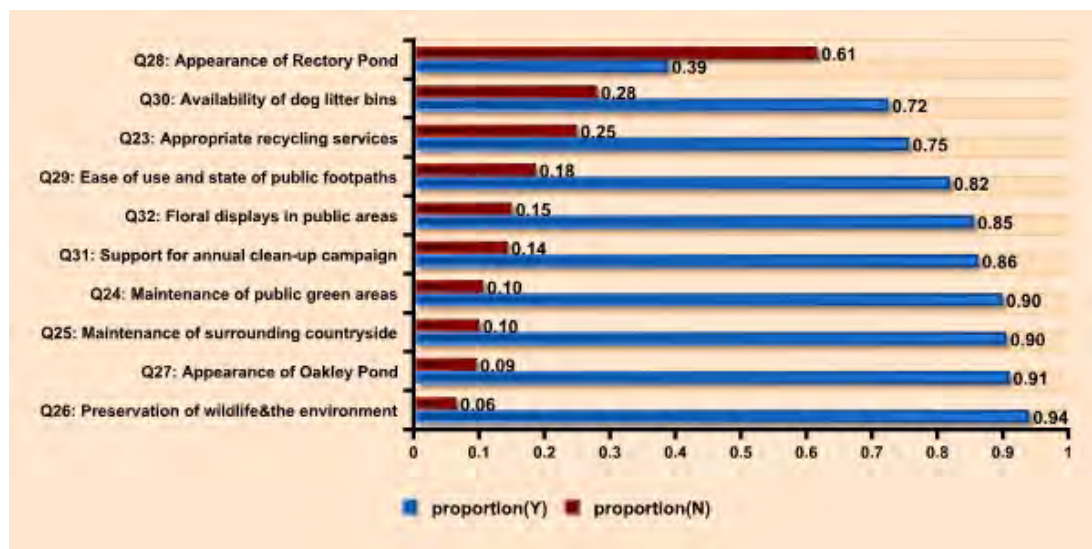
Overall pedestrians (69%) and cyclists (68%) are catered for, although the 30% level of dissatisfaction is a clear indication that this is another area of concern for the population.

*“Cycle paths would save lives and improve traffic flow.”*

*“Current traffic flow very dangerous for cyclists”.*

*“Speed limits not adhered to”.*

## Environment



**Figure 6 Distribution of responses for the Environment section**

The bar chart presented in Figure 6, shows the level of satisfaction that exists in the community with various environmental aspects of the Parish. The local environment, both natural and man-made, provides the framework for the existence of the Parish, and is clearly important to the community as demonstrated by the 90% satisfaction expressed in questions about the maintenance of the surrounding environment, and the various comments collected throughout the consultation process, both from the adults and the children. Further evidence of this point is demonstrated by the overwhelming support (86%) for an annual clean-up campaign, the level of satisfaction with the maintenance activities carried out in public green areas (90%), and the vote of support in favour of a greater number of floral displays in public areas (85%).

With 94% of the respondents asserting their satisfaction with the preservation of wildlife and the environment, it is reasonable to conclude that the environmental group operating in the area is working to the expected standards. Of the two existing ponds, the appearance of Oakley pond passes with flying colours with a 91% vote of approval, whilst the Rectory Road pond is in obvious need of care as 61% of the respondents showed dissatisfaction with its current look. There were numerous comments with suggestions on what should be done about

it, most of which referred to the urgent need for a cleaning job and scheduling of an adequate maintenance programme.

Areas of concern regarding environmental matters relate to the availability of recycling services (75%), the number, distribution and use of the dog litter bins (72%), and the ease of use and current state of the public footpaths in the area (82%). With regards to this last aspect, the most common comments included in the responses received, referred to overgrown paths, inaccuracy of the maps that are available, and the need for more board maps.



Even though there is a reasonable level of satisfaction with the recycling services that are currently available, it is worth noting that a number of responses indicated the need for additional services such as kerbside glass recycling collection, and a battery recycling point.



*“Not environmentally friendly to drive to the recycling facilities at Beach Park”.*

*“Recycling near shops would help non-car owners”.*

*“Need more waste bins or fewer dogs”.*

*“Want glass collection to be made available as part of the local recycling services”*

## Appendices: Action Plan

Oakley and Deane Parish Council appreciates the work the volunteer Village Vision Steering Group has undertaken over the past three years to produce this document and Community Action Plan.

This Action Plan will now form part of the Parish Council's annual planning and budgeting procedures. The Actions priority will be considered where we are shown as the Project Management or Lead partner.

At present we are unable to set specific dates for the completion of any of the listings, as all local councils are having to operate under severe financial constraints and are facing significant changes to legislation affecting local authorities' powers and responsibilities.

Nevertheless, the Action Plan will be an excellent reference source on what local people want, their preferences and concerns. It will be widely used not only by the Parish Council, but by Basingstoke and Deane Borough Council, Hampshire County Council, developers, entrepreneurs and local people themselves wanting to improve aspects of our area. As has happened in other Hampshire villages, the Action Plan may also inspire the formation of an Oakley, Deane and Newfound Community Association to lobby, co-ordinate approaches and help bring residents' wishes to fruition. It will be a useful document long into the future.

**John Strawbridge**  
**Oakley and Deane Parish Council**  
**September 2011**

Q3 Are you satisfied with the variety of shops available in the Parish?	Q13 Do you believe that the flow and speed of traffic is adequately managed through the Parish?	Q23 Are you satisfied with the services currently available for recycling in the Parish?
Q4 Are you satisfied with the Post Office and Postal Services currently available in the Parish?	Q14 Are you satisfied with the level of street lighting in the area?	Q24 Are you satisfied with the way the public green areas are maintained in the Parish?
Q5 Are you satisfied with the eating/ drinking establishments currently available in the Parish?	Q15 Is adequate parking available around your home?	Q25 Are you satisfied with the maintenance activities carried out in the surrounding countryside?
Q6 Are you satisfied with the provision and access to existing Health Care in the Parish?	Q16 Is adequate parking available in local public places?	Q26 Are you satisfied with the current activities carried out to preserve trees and wildlife areas in the Parish?
Q7 Are you satisfied with the current Crime prevention/Community Policing in the Parish?	Q17 Do you consider the Traffic signs around the Parish adequate?	Q27 Are you satisfied with the appearance and maintenance of Oakley village pond?
Q8 Are you satisfied with the Utility services (e.g. gas/ electricity/ water/ sewerage) provided for the Parish?	Q18 Do you consider pedestrians are adequately catered for around the Parish?	Q28 Are you satisfied with the appearance and maintenance of the Rectory Road pond?
Q9 Would you use a Village Market, as a seller/buyer if one were to be established to run periodically in the Parish?	Q19 Do you consider cyclists are adequately catered for around the Parish?	Q29 Are the countryside public footpaths clear and easy to use? (E.g. good maps available, clearly marked, unobstructed, etc)
Q10 Are you satisfied with the clubs/groups available for people of your age in the Parish?	Q20 Is access for commercial transport, such as delivery vehicles, adequate?	Q30 Do you think there are sufficient litter and dog waste bins in the Parish?
Q11 Are you satisfied with the current level of Broadband provision in your area?	Q21 Are you satisfied with the recent improvements undertaken at the Pack Lane / Fox Lane crossroads in Oakley?	Q31 Would you support an annual 'clean-up' campaign?
Q12 Does the current bus service for the Parish meet your needs?	Q22 Are you satisfied with the general maintenance of the roads and footpaths in the Parish?	Q32 Would you like to see more plants and flowers in key/central points around the Parish?

Table 1 List of questions in 2010 survey



# Community Action Plan

ODPC = Oakley and Deane Parish Council / BDBC = Basingstoke and Deane Borough Council / HCC = Hampshire County Council

Name of Parish: Oakley & Deane Start Date: 2011

ODPC = Oakley and Review Period: 12 months (financial cycle)

Plan id	Objective	Actions	Quest section No	Lead Partner	Responsible Bodies and Other Partners	Justification / comments (refer to community support from consultation)
AP001	Village Association	Formation of an association of volunteers with the aim of co-ordinating activities of Village groups and overseeing implementation of this action plan.	2	ODPC and BDBC	Community Development & Learning initially then form own organisation	17% people were interested in local groups and 83% thought some of the suggestions were great (e.g. market)
AP002	Community meeting place	Support possibility of some combination of community coffee shop, Internet café, local produce market etc.	2	ODPC	Initially Oakley & Deane Community group; then form own organisation	(as above AP001)
<b>Safer (e.g. Reducing anti-social behaviour, reducing speed on roads, emergency planning)</b>						
AP003	Improve safety of Fox Lane / Pack Lane cross road.	Contact Transport authorities. Involve Council discuss in more detail. Ask to look at all possible workable solutions, bearing in mind the already protracted consultations over proposed roundabout.	3	ODPC	HCC Highways / BDBC Engineering Landscape & Parking (ELP) Team	Needed as a matter of priority given that this is an action derived from the issues with highest number of requests from the questionnaire (52% of respondents)
AP004	Consider pedestrian / pelican crossing in Oakley Lane close to school and shops to increase safety outside school patrol time.	Consider construction of pedestrian crossing in Oakley Lane.	3	ODPC	HCC Highways / BDBC ELP Team	(as above AP003). Issue also raised by youth project.
AP005	Design and deploy a more proactive and efficient plan for maintaining the roads and pavements on the Parish	The Parish Council could develop an outline of the regular type of maintenance that is expected for the roads on the neighbourhood.	3	ODPC	HCC Highways / BDBC ELP Team	Issue with 4th highest number of comments on the responses received from the Community during the Consultation period (44% of respondents)
AP006		Design a co-ordinated way of informing HCC about where work on pot-holes or pavements needs to be done.	3	ODPC	HCC Highways / BDBC ELP Team	Various comments were included as part of the responses on level of satisfaction to road and pavement maintenance activities

AP007		More local grit bins with procedure for ensuring that grit is available when needed. Lobby for gritting secondary roads.	3	ODPC	HCC Highways / BDBC ELP Team	(as above AP006)
AP008		Design local contingency plan for clearing the snow from pavements over the winter period if the walking becomes hazardous.	3	ODPC	HCC Highways / BDBC ELP Team	(as above AP006)
AP009	Review speed management in Oakley.	Consider reducing speed limits in some areas. Explore traffic calming measures and vehicle activated signs. Flashing speed limit signs by school.	3	ODPC	HCC Highways / BDBC ELP Team	52% support (2nd most worrying issue brought up by the residents)
AP010	Pedestrian safety	Investigate the feasibility of putting a footpath along Rectory Road to address the current concerns of the Community.	3	ODPC	HCC Highways / BDBC ELP Team	31% of the community raised concerns regarding pedestrian safety
AP011	Pedestrian safety-II	Liaise with the ODPC and the BDBC regarding the appropriate distribution of lighting in the public and/or residential areas, taking special care not to contribute to the "light pollution" problem that affects many of the larger towns/cities in this and other countries.	3	ODPC	HCC Streetlighting Team	(as above AP010)
AP012	Prevent pavement parking	Continuing to look at how to minimise pavement parking in the village.	3	ODPC	BDBC ELP Team & Hampshire Constabulary	30% support. <i>Issue also raised by the youth project</i>
AP013	Increase police presence in the Parish	Look into the feasibility of increasing the Police presence in the area.	2	ODPC	Hampshire Constabulary. Basingstoke & Deane Country Watch. Basingstoke & Deane Rural Sector	40 concerns were raised by residents on the subject of Police absence in the area
<b>Prosperous (e.g. Supporting economy of villages, Tourism, Supporting employment in rural areas)</b>						
AP014	Improve the performance of the broadband service in the area	Talk with BT and other service providers	2	Village Association	BT-broadband other service providers	40% of respondents raised the poor quality of broadband speed as a concern in the consultation process

AP015	Promote small business / home worker networking	Publicise and support local Business Groups. Consider ways to encourage Businesses to locate in Oakley.	2	Village Association	The Link, BDBC, Federation for Small Businesses. Business link	30% of respondents raised the lack of diversity of the businesses (shops) in the Parish as a matter of concern. The need for better quality eating places
AP016	Improve the Postal services where possible to support the growth of a thriving local business	Discuss with the Royal Mail and relevant bodies the possibility of increasing the number of postal collections, and ensuring that the existing PO boxes are collected on a regular basis	2	ODPC	Royal Mail	Even though the "Postal Service" rated the highest level of satisfaction in the Consultation process; the 4% that expressed concerns with regards to the absence of more collections should be heard specially as these concerns were mostly raised by residents that run a local business
AP017	More part time jobs for senior pupils	Encourage local businesses, shops, service providers, farms etc to consider employing older pupils	YP	Village Association	Local commercial concerns.	<i>Issue raised by youth project</i>
AP018	Improve the availability and quality of the public transport that covers the route in/out of the Parish	Hold discussions with the Transport department and BDBC regarding the time tables and routes that are currently available. It should include provision of better access for all, i.e. elderly/disable residents, mums with pushchairs, etc	3	ODPC	Service Provider & BDBC Transport Team	21% of the respondents raised concerns on the poor choice of route. Additional concerns were expressed with regards to accessibility when the bus is busy (e.g. too many pushchairs).
<b>Healthy (e.g. fostering a sense of place and belonging, improving health and well-being of local people and young people, promoting independence of vulnerable people)</b>						
AP019	Improve the availability / visibility of the signs to places of special public interest including rural footpaths and walking routes	Liaise with the ODPC and BDBC to identify signs that might be needed to inform people going through the area on the location of places of special public interest	4	ODPC	HCC Rights of Way Team	18% of the community expressed concerns on the absence of signs to places of special interest (e.g. PO, churches), and also the absence of good maps, and the general quality of the public footpaths
AP020	To improve outdoor public spaces	Continue to look at the feasibility and practicality of improving outdoor recreational spaces so that they cater for ALL ages	4	ODPC	Business proprietors. Shop owners	85% of the responses were in favour of improving the look of all the public areas with things such as flowers or shrubs. See youth project: requests for playing field equipment suitable for 11+ age group.

AP021		Consider the practicality of providing more seats for people to rest throughout the Parish at focal points, e.g. bus stop	4	ODPC	Parish council & village initiative	(as above AP020)
AP022	To improve appearance of areas around shops and pubs	Ensure proprietors take care of the immediate surroundings. Enforce relevant bye-laws.	4	ODPC	Business proprietors. Shop owners	35% of the comments included demonstrated the interest there is to ensure that the Parish looks at its best at all times
AP023	To promote a healthier lifestyle by providing better means for people to get around without the need of a car	To hold discussions with HCC/BDBC to see how the pavements and footpaths might be improved to facilitate the movement of people around the Parish. Step up consultations to regularise footpath usage.	3	ODPC	HCC Highways/Basingstoke and Deane Borough Council	31% of responses referred to the problems pedestrians have when getting around the Parish
AP024	To improve the Health Services available in the Parish	Hold discussions with the local GP regarding the poor availability of appointments at the Oakley surgery	2	ODPC	Oakley & Overton Partnership	47% of the Community raised concerns on the difficulty of getting themselves to Overton and the reduced number of appointments at the local Surgery
AP025		Hold discussions with local GP on the lack of pre-natal and reduced post natal care available in Oakley.	2	Oakley & Overton Partnership	Friends of Oakley Surgery	
AP026	Improve the availability and efficiency of the basic services to all the residential areas located in the Parish	Hold discussions with the relevant bodies on the best way to improve and/or increase the level of basic services such as gas and sewage for those sectors of the Parish that are not currently supplied	2	ODPC	BDBC & Utility Providers	10% of the responses received expressed concerns on the absence of sewage services in certain areas of the Parish, i.e. Pardown. No other sector was named but it is important to assess whether any more residents are affected by this
AP027	To promote the healthy and rural feeling of the Parish ensuring that all the plants, trees, hedges that give the place its distinctive natural feelings are well kept throughout the year	Draw an appropriate maintenance plan with the relevant groups responsible for trimming and maintaining the greenery growing in all the public places, including paths, lanes, walking areas.	4	ODPC	Environmental Groups/ local interest groups e.g. Ramblers	around 18% of the community explained their resistance to walk and enjoy the local neighbourhood through grumblings on the poor maintenance of this aspect of the Parish

AP028	Play equipment in parks suitable for older children e.g. climbing equipment, assault course	Identify play/ green areas in the Parish which might be suitable for this use. Research equipment, consult with other communities already where these areas already exist.	YP	ODPC	Local interest groups e.g. scouts guides etc	Issue raised by youth project
AP029	Better facilities for sports in parks or unused land e.g. basket ball nets, rugby posts, football goals	As above.	YP	ODPC	as above	Issue raised by youth project
AP030	Adventure & orienteering trails in local woodland		YP	ODPC/ Village Association	ODPC, local land owners, environmental groups / local interest groups	Issue raised by youth project
AP031	More activities for pre-teens e.g. clubs: nature & environment, science, sewing cooking, crafts, book/ writers' group	Consult with already existing similar adult groups with a view to setting up groups for younger people. U3A ( University of the Third Age) a group which could help and a model to follow.	YP	Village Association	School, village interest & hobby groups. U3A	Issue raised by youth project
Greener (e.g. reducing carbon footprint in the community, reducing waste and increasing recycling, encourage consumption of local produce, increase efficiency in use of resources, increasing diversity of local wildlife).						
AP032	To promote the use and enjoyment of green public areas through a better maintenance plan to ensure the parks, plants and equipment look at their best all the time	Liaise with the ODPC, the BDBC and relevant local bodies responsible for the maintenance of the green areas including the equipment in the parks	4	ODPC	Village Association / local interest groups	10% of respondents made unhappy comments regarding the general look & feel of the public green areas. Overgrown footpaths, grass in need of more regular mowing, were some of the comments expressed in the completed questionnaires
AP033	Improve and maintain the pond located on Rectory road	This project is already underway and may be nearing completion or complete when this Plan is published.	4	ODPC	Oakley Manor; expert on pond clearance and general maintenance of wildlife areas	61% of the responses (881 residents) raised concerns on the poor state of this pond, for example "The pond is a mess- generally completely dry"
AP034		Design a regular maintenance plan to help extend the Rectory pond's new healthy appearance	4	ODPC	Agree on a maintenance plan maybe with the H&LW wildlife group / village volunteers	90% of the community (1297 residents) value the surrounding countryside and are keen to ensure it is properly maintained

AP035	Improve and extend the type of recycling services provided to the residents	Include curb side glass recycling collection in addition to the existing services	4	ODPC	BDBC and waste collection services	25% of the people (328 residents) expressed interest in improving the current recycling facilities
AP036		Battery disposal point is needed in the Parish	4	ODPC	Talk with local businesses who might be willing to serve as point of collection. Liaise with waste services	(as above)
AP037		Look into the feasibility of setting up a local garden rubbish recycling scheme. Provide the Community with Compost making facilities	4	ODPC	Talk to people in charge of running the allotments; local farmers might be interested in setting some waste management system on their land	(as above) Issue also raised by youth project
AP038		Look at the feasibility of transferring the current location of the recycling facilities to a more central location	4	ODPC	Talk to BDBC about this matter	
AP039	Anti-litter and dog fouling	Continue to promote anti dog-fouling and anti litter	4	ODPC	Village initiative to educate on dangers of mess and litter	42 comments in the consultation process raised this point.
AP040		Look into increasing the number of dog waste bins in the Parish. The study should include a plan for a regular emptying task otherwise they will not be fit for purpose.	4	ODPC and BDBC	Look at the possibility of increasing the number of bins and review the best locations for them. Enforce bye-laws	28% of the responses collected (403 responses) expressed dissatisfaction with the number of dog bins that are currently available
AP041	Organise annual clean-up campaign	Annual organised litter-picking days with picnic	4	ODPC	Village initiative/ educational campaign	86% of the respondents (1206 residents) were willing to take part in a regular cleanup operation
AP042	Encourage cycling/reduce driving	To examine the provision of an adequate cycle path linking the Parish to Basingstoke. This is actively under consideration by the ODPC and may well have progressed at the time of publication.	4	ODPC	BDBC Transport Team	32% of the Community (451 residents) is in favour of this type of cycle path. ONE PERSON suggested this was a waste of money
AP043		Discuss with shop owners installing cycle racks in front of the shops	4	ODPC	Shop owners & BDBC Transport Team	32% of the Community is in favour of using bikes as a better alternative for getting around

AP044	Construct cycle lanes where possible to encourage cycling to school.	Consider feasibility of cycle lanes / accompanied group cycling to school. Cycle Training for school.	YP	Village Association	Village initiative to encourage young people to cycle or volunteer to accompany groups of cyclists	Issue raised by youth project
AP045	More varied habitats in parks and open spaces to encourage wildlife	Obtain expert advice on what are the best forms of habitat for the area and where planting would be most successful	YP	ODPC	ODPC environment group. Village initiative to undertake planting. Schools to engage pupil interest.	Issue raised by youth project

